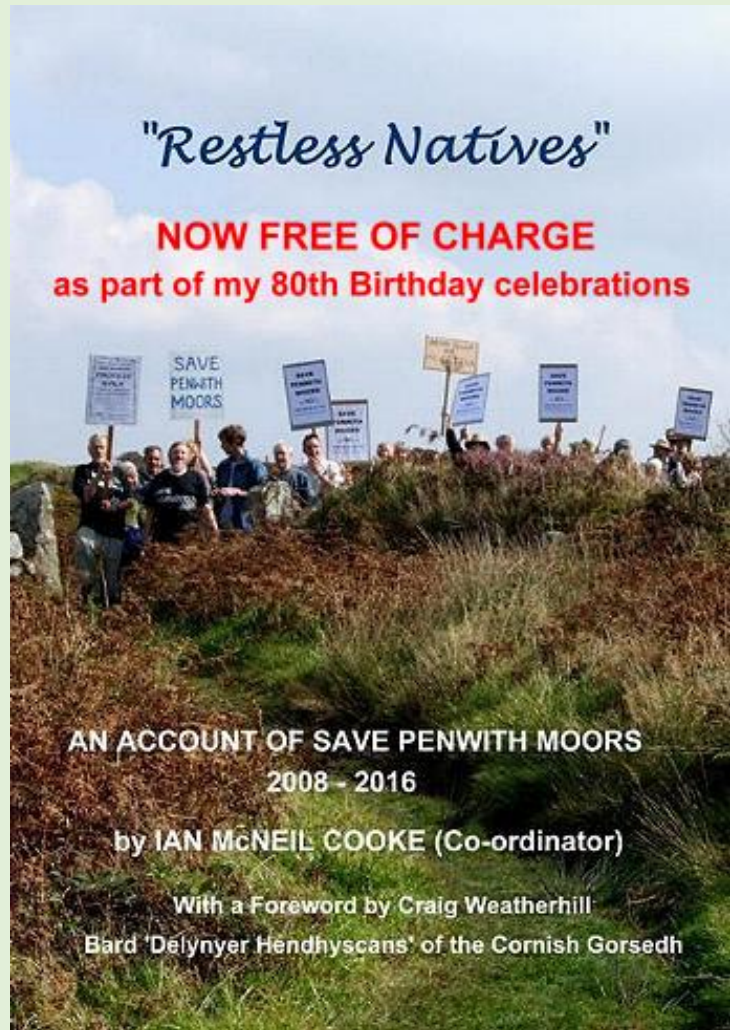


As a way of thanking all those who have supported our campaign over the past 9 years, and having now reached the grand old age of 80, I am offering copies of *Restless Natives* free of charge (including UK postage) to all our current Facebook members on a first come first served basis.

“Restless Natives” is an account of the campaign activities of a small band of environmental activists – backed up by over 900 supporters – who have been instrumental in limiting the enclosure with barbed wire fences, gates and cattle grids of open access heathland and moorland, and registered common land, in the extreme far west of the United Kingdom – the Land’s End Peninsula (West Penwith). A policy decided upon by European institutions and the British Government who determine the agricultural policies to be imposed on our unique Cornish landscape with its many hundreds of prehistoric monuments and sites.

It has been a long and arduous confrontation between local communities and far removed agencies and organisations, principally Natural England, English Heritage, the National Trust and the Country Landowners and Business Association, and this publication is a permanent historic tribute to all those who have helped Save Penwith Moors over the past eight years.



TO ORDER: By post, email or phone to

Ian Cooke
15A Stennack Parc
Trewellard, Pendean
Penzance
Cornwall TR19 7TB

Tel: 01736-786049

Email: info@savepenwithmoors.com

LOCAL COLLECTION: from my home address by prior appointment.

CONTENTS OF ‘RESTLESS NATIVES’

LIST OF ILLUSTRATIONS

PREFACE

FOREWORD

PART ONE

Gathering storm clouds

CHAPTER 1: “Cleared of Scrub and Under the Plough”

1. MINISTRY OF AGRICULTURE FISHERIES AND FOOD
2. 1983: INCREASING CONCERN
3. 1984: PUBLIC ANGER AND UNEASE
4. 1985: LOCAL OPPOSITION MOUNTING
5. 1986: REVIEW OF POLICY
6. 1987: PROTECTING THE LANDSCAPE
7. 1988 POPULAR WITH LOCAL FARMERS
8. ENVIRONMENTALLY SENSITIVE AREAS

CHAPTER 2: “A seriously troubled landscape”

1. THE HEATH PROJECT
2. LACK OF COMMUNICATION
3. HEATHFEST & PUBLIC EVENTS
4. COMMUNICATION PLAN & MANAGER
5. ADMISSION OF FAILURE
6. HIGHER LEVEL STEWARDSHIP – A FLAWED SCHEME
 - 6a. ACCESS and HEALTH AND SAFETY
 - 6b. MONITORING
 - 6c. NON-GRAZING REGIMES
 - 6d. CRITIQUE OF HIGHER LEVEL STEWARDSHIP

CHAPTER 3: “Quite by chance”

1. AND IN THE BEGINNING – 2008
2. LAUNCHING OF SAVE PENWITH MOORS
3. OUR CAMPAIGN BEGINS
 - 3a. PROTEST WALK
 - 3b. INTERREG
 - 3c. ST JUST TOWN COUNCIL
 - 3d. PENWITH DISTRICT COUNCIL
4. THE FIRST HEATHLANDS FORUM
5. STOCK PROOFING IN FULL SWING
6. END OF THE HEATH PROJECT
7. SUMMARY OF OUR OBJECTIONS TO THE HEATH/HLS SCHEMES

PART TWO

Four plus two

CHAPTER 4: “Increasing level of opposition”

1. NINE MAIDENS COMMON
2. THE HEATH PROJECT
3. AND THERE’S MORE TO COME

CHAPTER 5: “Cattle do not pose a particular risk”

1. CARNYORTH COMMON (aka Carn Kenidjack)
2. THE HEATH PROJECT
3. THE CATTLE GRID
4. GATES, MOUNTING BLOCKS & WATER TROUGHES
5. HIGHER LEVEL STEWARDSHIP
6. ACCIDENTS
7. WARNING NOTICES
8. FIRES AND OLD BARBED WIRE
9. TREGESAL STONE CIRCLE CATTLE DAMAGE
10. THE HOLED STONES

CHAPTER 6: “Committed to sensitive management”

1. LANYON FARM: MEN-AN-TOL and LANYON QUOIT CROFTS
2. THE HEATH PROJECT
3. DIRECT ACTION
4. HIGHER LEVEL STEWARDSHIP
5. MEN-AN-TOL and CATTLE DAMAGE
6. KERNOW BRANCH of the CELTIC LEAGUE
 - 6a. INTERNATIONAL CELTIC CONGRESS
 - 6b. WORLD HERITAGE
 - 6c. THE CELTIC LEAGUE
7. PURELY FINANCIAL

CHAPTER 7: “Consternation and embarrassment”

1. CARN GALVA
2. ENVIRONMENTALLY SENSITIVE AREAS
3. THE HEATH PROJECT
4. EXCAVATIONS
5. THE PENDER FILE
6. THE DITCH THAT NEVER WAS
7. NATIONAL TRUST ADMITS DAMAGE
8. CARN GALVA GOES ELECTRIC
9. REMEDIAL WORKS
10. B3306 CATTLE GRIDS
11. HIGHER LEVEL STEWARDSHIP
12. OBSTRUCTION AND VANDALISM

CHAPTER 8: “An unlawful obstruction”

1. WATCH CROFT (Watchcroft)
2. HEATH PROJECT
3. THE TWO CATTLE GRIDS
4. EXCAVATIONS
5. HIGHER LEVEL STEWARDSHIP

CHAPTER 9: “Float in the middle of the heath”

1. CHUN DOWNS
2. HEATH PROJECT
3. HIGHER DOWNS
4. HIGHER LEVEL STEWARDSHIP

PART THREE

Too much information

CHAPTER TEN: “A voice box”

1. CLOSED HEATHLANDS FORUMS
2. ACCESSIBILITY OF FORUM
3. CALLS FOR DISMISSAL OF NT OFFICIAL
4. END OF THE HEATHLANDS FORUM AND AFTER
5. THE WALDON REPORT
6. ST JUST TOWN COUNCIL and CORNWALL COUNCIL
7. SPM AND THE MEDIA

CHAPTER ELEVEN: “They failed to communicate”

1. PARLIAMENTARY OMBUDSMAN
2. AARHUS CONVENTION COMPLIANCE COMMITTEE (ACCC)
3. HERITAGE LOTTERY FUND

CHAPTER TWELVE: “Very irritated landowners”

1. COMMON LAND – OUR MOTIVATION
2. WHAT IS THE PROCESS OF RE-REGISTRATION?
3. THE MANORIAL SYSTEM
4. A LEGAL QUESTION
5. WASTE OF A MANOR – A PHYSICAL QUESTION
6. WHAT IS OUR PURPOSE FOR COMMONS RE-REGISTRATION?
7. APPLICATIONS and INQUIRIES/HEARINGS
 - 7a. CARN GALVA
 - 7b. CHUN DOWNS
 - 7c. CARNYORTH COMMON
 - 7d. WATCH CROFT
 - 7e. BOSULLOW COMMON
8. DEFRA and LORD de MAULEY
9. THE OPPOSITION
10. APPLICATION FOR COSTS

CHAPTER THIRTEEN: “Loved, enjoyed and supported”

1. CORNWALL WILDLIFE TRUST
2. PENWITH LANDSCAPE PARTNERSHIP
3. FIRST AND LAST – OUR LIVING WORKING LANDSCAPE

PART FOUR

“A small and vociferous local lobbying group”

CHAPTER FOURTEEN: “Manifestly unreasonable”

1. TOO MUCH FREEDOM OF INFORMATION
2. OBSESSIVE
3. ABUSE AND INNUENDO
4. NOTHING I CAN USEFULLY ADD

CHAPTER FIFTEEN: “Substantial increase in funding”

1. NELMS and BREXIT - WHAT IS GOING ON?

CHAPTER SIXTEEN: “So far remain free of stock proofing”

1. WHAT WE HAVE ACHIEVED
2. SAVE PENWITH MOORS OPINIONS VINDICATED
3. SAVE PENWITH MOORS - A VISION FOR WEST PENWITH
4. AFTERWORD

ANNEX 1: Natural England answers to Save Penwith Moors questions, comments and complaints following a visit to Carnyorth Common (January 2011)

ANNEX 2: *The Tinnens’ Way: the antiquity of the trackway* by Craig Weatherhill

ANNEX 3: Some of the comments received by Save Penwith Moors during 2008/2009

